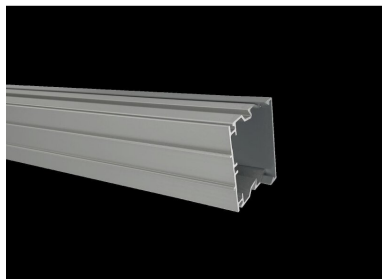


**PRODUCT NO.** 4955

**DOTLUX LED continuous row system LINEAcompact Blind unit two-length**



to the product page

Two-length LINEAcompact blind unit.

<b>SUCCESSION ARTICLE</b>	-	<b>INPUT VOLTAGE</b>	176 - 240 V AC/DC
<b>WEIGHT IN KG</b>	3.5	<b>INPUT VOLTAGE SPAN</b>	176-240 AC/DC
		<b>WARRANTY IN YEARS</b>	7
		<b>INPUT VOLTAGE RANGE LUMINAIRE</b>	176-240 AC/DC
		<b>ETIM GROUP IDENTIFICATION NUMBER</b>	EC002892
<b>Dimensions</b>		<b>TYPE OF ACCESSORY/SPARE PART</b>	Blind cover
<b>length:</b> 2886mm		<b>SPARE PART</b>	Nein
<b>width:</b> 62mm		<b>ACCESSORY</b>	No
<b>height:</b> 51mm		<b>COLOUR</b>	Aluminium
		<b>BEG FUNDING</b>	Only relevant in Germany