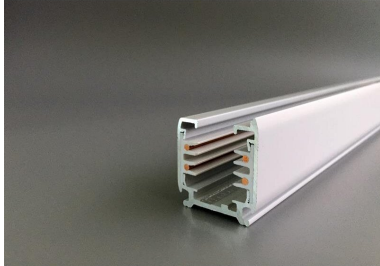


PRODUCT NO. 3893-W1

DOTLUX 3 phase power rail, 1 m, white matt



to the product page

- 3 phase busbar, 1 m., white

SUCCESSION ARTICLE	-	PROTECTION CLASS	none
WEIGHT IN KG	0.88	WARRANTY IN YEARS	2
		SIMILAR TO RAL-COLOUR	9003
		SUITABLE FOR SURFACE MOUNTING	Yes
		ETIM GROUP IDENTIFICATION NUMBER	EC000101
Dimensions		SUITABLE FOR SUSPENDED MOUNTING	Yes
length: 1000mm		SURFACE-MOUNTED	Yes
width: 33mm		BENDABLE	Nein
height: 36mm		SUITABLE FOR BUS CONNECTION	Nein
		BUILT-IN	No
		MATERIAL	Aluminium
		BEG FUNDING	Only relevant in Germany
		SURFACE FINISHING	Matt
		SHAPE	Other
		COLOUR	White