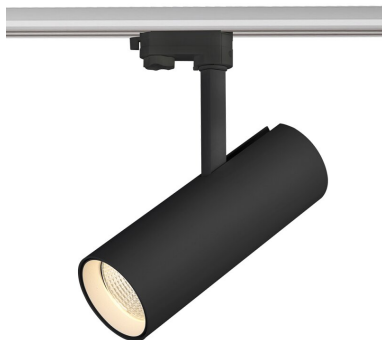


PRODUCT NO. 3845-040036

DOTLUX LED Tracklight SLIMtrack 20-28W 4000K TRUE COLOR black



to the product page

- Vivid and high-contrast colors due to DOTLUX "TRUE COLOR" technology - always true colors
- Compatible with EUTRAC and almost all other 3-phase tracks
- Consistent light colors through 3-step MacAdam color sorting
- "Stay-cool" LED chip technology enables a modern, slim housing design with constant light output
- One item - 4 power levels adjustable (20W / 24W / 26W / 28W factory preset)
- High quality aluminum housing with powder coating (RAL9005)
- Toolless exchangeable high power reflectors with bayonet lock
- Branded ballast from OSRAM
- Sustainable product design due to easily replaceable components

SUCCESSION ARTICLE	3845-199036
WEIGHT IN KG	1.2
POWER CONSUMPTION IN WATTS	max. 28
NET LUMINOUS FLUX IN LUMENS	max. 2670
LUMEN PER WATT	95

Dimensions

length: 300mm
diameter: 85mm

BEAM ANGLE	36
PROTECTION CLASS (IP)	IP20
LIGHT COLOR	white
INPUT VOLTAGE	220 - 240 V AC
SERVICE LIFE	approx. 50.000 h at 25°C
COLOR TEMPERATURE IN KELVIN	4000
COLOR-RENDERING-INDEX	CRI > 95 TRUECOLOR
POWER FACTOR	0,9
INRUSH CURRENT IN A	0
IK PROTECTION	IK07
LUMEN PER WATT	95
PROTECTION CLASS	II
VOLTAGE TYPE	AC
HOUSING COLOUR	black
GLARE-FREE	UGR < 19
INSTALLATION OPENING WIDTH IN MM	85
INSTALLATION OPENING DIAMETER IN MM	78
INSTALLATION OPENING LENGHT IN MM	135
INPUT VOLTAGE SPAN	220-240 V AC
WARRANTY IN YEARS	5
RATED CURRENT	0.16
SIMILAR TO RAL-COLOUR	9005
SUITABLE FOR SURFACE MOUNTING	No
SUITABLE FOR MOUNTING	No
DIMMING WITHOUT DIMMER	No

INPUT VOLTAGE RANGE LUMINAIRE	220-240 V AC
ASSORTMENT	Highline
ENERGY EFFICIENCY CLASS ACCORDING TO EU REGULATION 2019/2015	not required
LED-LIFETIME LIGHT SOURCE L70/B50 AT 25°C	50000
ETIM GROUP IDENTIFICATION NUMBER	EC001744
WITH ILLUMINANT	Yes
SUITABLE FOR WALL MOUNTING	No
SUITABLE FOR SUSPENDED MOUNTING	No
SUITABLE FOR CEILING MOUNTING	No
SUITABLE FOR WORKPLACE ACCORDING TO EN 12464-1	Yes
SUITABLE FOR NUMBER OF LIGHT SOURCES	1
LAMP HOLDER	-
MATERIAL COVER	Plastic matt/satinized
WITH CONTROL GEAR	No
DIMMING 0-10 V	No
DIMMING 1-10 V	No
DIMMING DALI	No
DIMMING DMX	No
DIMMING DSI	No
DIMMING POTENTIOMETER (INTEGRATED)	No
DIMMING LINESWITCH	No
DIMMING MANUFACTURER'S PROPRIETARY SYSTEM	No
DIMMING MAINS VOLTAGE MODULATION	No
DIMMING PHASE CUT-OFF	No
DIMMING PROGRAMMABLE	No
DIMMING RF	No
DIMMING SINE WAVE REDUCTION	No
DIMMING TOUCH AND DIM	No
DIMMING ZIGBEE	No
DIMMING WITH PUSH-BUTTON	No
DIMMING DEPENDING ON CONTROL GEAR	No
NO DIM FUNCTION	Yes
LIGHT DISTRIBUTOR	Reflector
COLOUR CONSISTENCY (MCADAM ELLIPSE)	SDCM6
DEGREE OF PROTECTION (NEMA)	1
IMPACT STRENGTH	IK07
LUMINAIRE WITH LIMITED SURFACE TEMPERATURE, SIGN "D" ACCORDING TO EN 60598-2-24	Yes
WITH MOVEMENT SENSOR	No
WITH LIGHT SENSOR	No
COVERING OF THE LUMINAIRE WITH THERMALLY INSULATING MATERIAL POSSIBLE	No
FILAMENT TEST ACCORDING TO IEC 60695-2-11	650 °C - 30 s
CONSTANT LIGHT OUTPUT (CLO)	Yes
TYPE OF WIRING	Through wiring included
PHOTOBIOLOGICAL SAFETY ACCORDING TO EN 62471	RG1
COMPATIBLE WITH CASAMBI	No

COMPATIBLE WITH APPLE HOMEKIT	No
COMPATIBLE WITH GOOGLE ASSISTANT	No
COMPATIBLE WITH AMAZON ALEXA	No
IFTTT SUPPORT AVAILABLE	No
SUITABLE FOR LOW VOLTAGE CABLE SYSTEM	No
SUITABLE FOR CLAMP-MOUNTING	No
SUITABLE FOR LIGHT-TRACK MOUNTING	Yes
SUITABLE FOR PEDESTAL/FLOOR MOUNTING	No
SUITABLE FOR TRAVERSE MOUNTING	No
EXCHANGEABLE CONTROL GEAR	No
SUITABLE FOR LAMP POWER IN W	-
LAMP TYPE	LED exchangeable
EMERGENCY POWER SUPPLY INTEGRATED	No
SURFACE BRUSHED	No
DIMMING DALI-2	No
DIMMING PHASE CUT-ON	No
DIMMING GPRS	No
LIFETIME L70/B50 AT 25°C	50000
PULSE DURATION IN µS	0
BEG FUNDING	Only relevant in Germany
ROTATABLE / SWIVELLING	355° / 85°
ENERGY EFFICIENCY CLASS OF THE LIGHT SOURCE OF A LUMINAIRE	E
LIGHT OUTLET	Direct
COLOUR OF LIGHT ADJUSTABLE	No
LUMINOUS FLUX ADJUSTABLE	No
BEAM ANGLE ADJUSTABLE	No
LIGHT SHARING	Symmetric
ADJUSTABILITY	Rotating and swivelling
SURFACE PROTECTION	Powder coating
BEAM ANGLE	Medium beam 21-40°
REFLECTOR	Other
TYPE OF CONTROL GEAR	Not required
CONNECTION TYPE	Solder