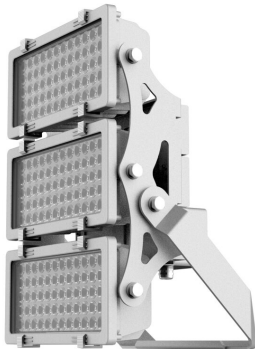


PRODUCT NO. 4871-040010

**DOTLUX LED floodlight HLFplus 600W 4000K 1-10V dimmable 10° beam angle**



to the product page

The compact high-power floodlight HLFplus is ideal for sports and soccer fields, large parking lots, construction site and crane lights, and much more.

- Extremely flexible application possibilities due to different beam angles (10°, 15°, 30°, 45°, 60°, 100°x38°)
- Excellent light distribution with minimum ULR values and low light scattering losses due to asymmetrical beam angle 100°x38°.
- Safe operation outdoors thanks to powder-coated housing with high IP protection (IP66) and real glass cover
- Very high operational safety thanks to integrated Multi Driver Technology: each spotlight has several independent power supplies with integrated overvoltage protection 10KV and 7 years DOTLUX warranty with an above average lifetime: L80>80.000h
- Adjustable brackets for hanging, standing and wall mounting included
- Dimming function available on request (FUNK/ZIGBEE/DMX/DALI)
- This luminaire is flicker-free and therefore also suitable for high-definition (HD) TV recordings
- Sustainable product design due to easily replaceable components
- Other light colors can be ordered from 1pc onwards

<b>SUCCESSION ARTICLE</b>	-	<b>BEAM ANGLE</b>	10
<b>PREDECESSOR ARTICLE</b>	4240-060	<b>PROTECTION CLASS (IP)</b>	IP66
<b>WEIGHT IN KG</b>	15	<b>LIGHT COLOR</b>	white
<b>POWER CONSUMPTION IN WATTS</b>	600	<b>INPUT VOLTAGE</b>	176 - 240 V AC/DC
<b>NET LUMINOUS FLUX IN LUMENS</b>	70000	<b>SERVICE LIFE</b>	approx. 80.000 h at 25°C
<b>LUMEN PER WATT</b>	117	<b>COLOR TEMPERATURE IN KELVIN</b>	4000
		<b>COLOR-RENDERING-INDEX</b>	CRI > 82
		<b>POWER FACTOR</b>	0,92
		<b>INRUSH CURRENT IN A</b>	0
		<b>IK PROTECTION</b>	IK08
<b>Dimensions</b>		<b>LUMEN PER WATT</b>	117
<b>length:</b> 562mm		<b>PROTECTION CLASS</b>	I
<b>width:</b> 335mm		<b>VOLTAGE TYPE</b>	AC/DC
<b>height:</b> 163mm		<b>HOUSING COLOUR</b>	gray
		<b>SUITED FOR EMERGENCY LIGHTING</b>	yes
		<b>SWITCH CYCLES</b>	> 160.000
		<b>OVERVOLTAGE PROTECTION</b>	up to 10000 V
		<b>WARRANTY IN YEARS</b>	7
		<b>L80/B10</b>	80000
		<b>SUITABLE FOR SURFACE MOUNTING</b>	No
		<b>SUITABLE FOR MOUNTING</b>	No
		<b>DIMMING WITHOUT DIMMER</b>	No
		<b>ASSORTMENT</b>	Proline

<b>ENERGY EFFICIENCY CLASS ACCORDING TO EU REGULATION 2019/2015</b>	not required
<b>LIFETIME L80/B10 AT 25°C</b>	80000
<b>LED-LIFETIME LIGHT SOURCE L70/B50 AT 25°C</b>	160000
<b>ETIM GROUP IDENTIFICATION NUMBER</b>	EC001744
<b>WITH ILLUMINANT</b>	Yes
<b>SUITABLE FOR WALL MOUNTING</b>	Yes
<b>SUITABLE FOR SUSPENDED MOUNTING</b>	No
<b>SUITABLE FOR CEILING MOUNTING</b>	No
<b>SUITABLE FOR WORKPLACE ACCORDING TO EN 12464-1</b>	No
<b>LAMP HOLDER</b>	-
<b>MATERIAL COVER</b>	Glass transparent
<b>TYPE OF CONTROL GEAR</b>	LED operating device current-controlled
<b>WITH CONTROL GEAR</b>	Yes
<b>DIMMING 0-10 V</b>	Yes
<b>DIMMING 1-10 V</b>	Yes
<b>DIMMING DALI</b>	No
<b>DIMMING DMX</b>	No
<b>DIMMING DSI</b>	No
<b>DIMMING POTENTIOMETER (INTEGRATED)</b>	No
<b>DIMMING LINESWITCH</b>	No
<b>DIMMING MANUFACTURER'S PROPRIETARY SYSTEM</b>	No
<b>DIMMING MAINS VOLTAGE MODULATION</b>	No
<b>DIMMING PHASE CUT-OFF</b>	No
<b>DIMMING PROGRAMMABLE</b>	No
<b>DIMMING RF</b>	No
<b>DIMMING SINE WAVE REDUCTION</b>	No
<b>DIMMING TOUCH AND DIM</b>	No
<b>DIMMING ZIGBEE</b>	No
<b>DIMMING WITH PUSH-BUTTON</b>	No
<b>DIMMING DEPENDING ON CONTROL GEAR</b>	No
<b>NO DIM FUNCTION</b>	No
<b>LIGHT DISTRIBUTOR</b>	Reflector
<b>COLOUR CONSISTENCY (MCADAM ELLIPSE)</b>	SDCM6
<b>IMPACT STRENGTH</b>	IK08
<b>SUITABLE FOR EMERGENCY LIGHTING</b>	Yes
<b>WITH MOVEMENT SENSOR</b>	No
<b>WITH LIGHT SENSOR</b>	Yes
<b>COVERING OF THE LUMINAIRE WITH THERMALLY INSULATING MATERIAL POSSIBLE</b>	No
<b>FILAMENT TEST ACCORDING TO IEC 60695-2-11</b>	-
<b>CONSTANT LIGHT OUTPUT (CLO)</b>	No
<b>CONNECTION TYPE</b>	Screwed terminal
<b>OPERATION BY BLUETOOTH</b>	No
<b>COMPATIBLE WITH CASAMBI</b>	Yes
<b>COMPATIBLE WITH APPLE HOMEKIT</b>	No
<b>COMPATIBLE WITH GOOGLE ASSISTANT</b>	No
<b>COMPATIBLE WITH AMAZON ALEXA</b>	No

<b>IFTTT SUPPORT AVAILABLE</b>	No
<b>REFLECTOR</b>	-
<b>SUITABLE FOR LOW VOLTAGE CABLE SYSTEM</b>	No
<b>SUITABLE FOR CLAMP-MOUNTING</b>	No
<b>SUITABLE FOR LIGHT-TRACK MOUNTING</b>	No
<b>SUITABLE FOR PEDESTAL/FLOOR MOUNTING</b>	Yes
<b>SUITABLE FOR TRAVERSE MOUNTING</b>	Yes
<b>EXCHANGEABLE CONTROL GEAR</b>	Yes
<b>LAMP TYPE</b>	LED not exchangeable
<b>EMERGENCY POWER SUPPLY INTEGRATED</b>	No
<b>SURFACE BRUSHED</b>	No
<b>DIMMING DALI-2</b>	No
<b>DIMMING PHASE CUT-ON</b>	No
<b>DIMMING GPRS</b>	No
<b>LIFETIME L70/B50 AT 25°C</b>	160000
<b>LIFETIME L90/B10 AT 25°C</b>	40000
<b>PULSE DURATION IN µS</b>	0
<b>BEG FUNDING</b>	Only relevant in Germany
<b>ENERGY EFFICIENCY CLASS OF THE LIGHT SOURCE OF A LUMINAIRE</b>	D
<b>LIGHT OUTLET</b>	Direct
<b>COLOUR OF LIGHT ADJUSTABLE</b>	No
<b>LUMINOUS FLUX ADJUSTABLE</b>	No
<b>BEAM ANGLE ADJUSTABLE</b>	No
<b>ADJUSTABILITY</b>	Rotatable
<b>LIGHT SHARING</b>	Symmetric
<b>BEAM ANGLE</b>	Extreme narrow beam 5-10°
<b>SURFACE PROTECTION</b>	Powder coating