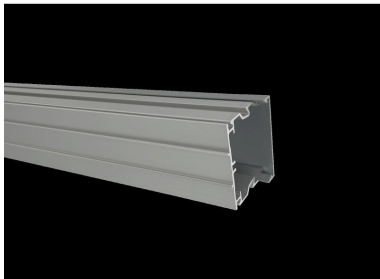


PRODUCT NO. 4954

DOTLUX LED continuous-row system LINEAcompact Blind unit single-length



to the product page

Single-length LINEAcompact blind unit.

SUCCESSION ARTICLE	-	PROTECTION CLASS (IP)	IP54
WEIGHT IN KG	2.71	LIGHT COLOR	-
		INPUT VOLTAGE	176 - 240 V AC/DC
		COLOR TEMPERATURE IN KELVIN	-
		INRUSH CURRENT IN A	0
		IK PROTECTION	-
Dimensions		PROTECTION CLASS	I
length: 1452mm		VOLTAGE TYPE	AC/DC
width: 66mm		HOUSING COLOUR	-
height: 63mm		SUITED FOR EMERGENCY LIGHTING	No
		INPUT VOLTAGE SPAN	176-240 AC/DC
		SUITABLE FOR SURFACE MOUNTING	Yes
		SUITABLE FOR MOUNTING	No
		INPUT VOLTAGE RANGE LUMINAIRE	176-240 AC/DC
		ENERGY EFFICIENCY CLASS ACCORDING TO EU REGULATION 2019/2015	not required
		ETIM GRUPPEN-ID	EC002892
		WITH ILLUMINANT	No
		SUITABLE FOR WALL MOUNTING	No
		SUITABLE FOR SUSPENDED MOUNTING	No
		SUITABLE FOR CEILING MOUNTING	Yes
		SUITABLE FOR LIGHT LINE CONFIGURATION	Yes
		LAMP HOLDER	-
		TYPE OF GRID	-
		TYPE OF CONTROL GEAR	-

WITH CONTROL GEAR	No
DIMMING 0-10 V	No
DIMMING 1-10 V	No
DIMMING DALI	No
DIMMING DMX	No
DIMMING DSI	No
DIMMING POTENTIOMETER (INTEGRATED)	No
DIMMING LINESWITCH	No
DIMMING MANUFACTURER'S PROPRIETARY SYSTEM	No
DIMMING MAINS VOLTAGE MODULATION	No
DIMMING PHASE CUT-OFF	No
DIMMING PROGRAMMABLE	No
DIMMING RF	No
DIMMING SINE WAVE REDUCTION	No
DIMMING TOUCH AND DIM	No
DIMMING ZIGBEE	No
DIMMING WITH PUSH-BUTTON	No
DIMMING DEPENDING ON CONTROL GEAR	No
NO DIM FUNCTION	Yes
LIGHT DISTRIBUTOR	-
LIGHT SHARING	-
BEAM ANGLE	-
LIGHT OUTLET	-
IMPACT STRENGTH	-
LUMINAIRE WITH LIMITED SURFACE TEMPERATURE, SIGN "D" ACCORDING TO EN 60598-2-24	Yes
SUITABLE FOR EMERGENCY LIGHTING	No
WITH MOVEMENT SENSOR	No
WITH LIGHT SENSOR	No
COVERING OF THE LUMINAIRE WITH THERMALLY INSULATING MATERIAL POSSIBLE	No
WITH AIR SLOTS	No
FILAMENT TEST ACCORDING TO IEC 60695-2-11	-
CONSTANT LIGHT OUTPUT (CLO)	No
TYPE OF WIRING	Through wiring included
CONNECTION TYPE	Push-in clamp
PHOTOBIOLOGICAL SAFETY ACCORDING TO EN 62471	-
COLOUR OF LIGHT ADJUSTABLE	-
LUMINOUS FLUX ADJUSTABLE	-
BEAM ANGLE ADJUSTABLE	-
OPERATION BY BLUETOOTH	No
COMPATIBLE WITH CASAMBI	No
COMPATIBLE WITH APPLE HOMEKIT	No
COMPATIBLE WITH GOOGLE ASSISTANT	No
COMPATIBLE WITH AMAZON ALEXA	No
IFTTT SUPPORT AVAILABLE	No
EXCHANGEABLE CONTROL GEAR	No
LAMP TYPE	-
EMERGENCY POWER SUPPLY INTEGRATED	No
DIMMING DALI-2	No

DIMMING PHASE CUT-ON	No
DIMMING GPRS	No
PULSE DURATION IN μS	0
BEG FUNDING	Only relevant in Germany
ENERGIEEFFIZIENZKLASSE DER LICHTQUELLE EINER LEUCHE	-
SURFACE PROTECTION HOUSING	Other
MATERIAL COVER	Without cover