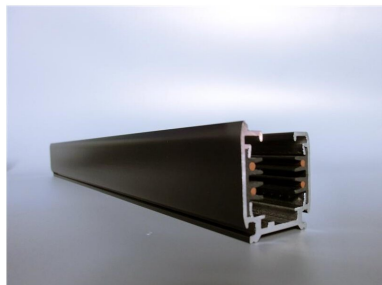


PRODUCT NO. 3893-53

DOTLUX 3 phase power rail, 3 m, black matt



to the product page

- 3 phase power rail, 3 m. black

SUCCESSION ARTICLE -
WEIGHT IN KG 2.6

Dimensions

length: 3000mm
width: 33mm
height: 36mm

PROTECTION CLASS none
SIMILAR TO RAL-COLOUR 9005
SUITABLE FOR SURFACE MOUNTING Yes
ETIM GRUPPEN-ID EC000101
SUITABLE FOR SUSPENDED MOUNTING Yes
SURFACE-MOUNTED Yes
BENDABLE Nein
SUITABLE FOR BUS CONNECTION Nein
BUILT-IN No
MATERIAL Aluminium
BEG FUNDING Only relevant in Germany
SURFACE FINISHING Matt
SHAPE Other
COLOUR Black