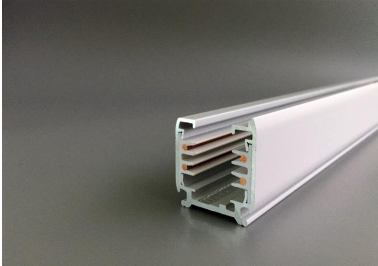


PRODUCT NO. 3893-W3

DOTLUX 3 phase power rail, 3 m, white matt



to the product page

- 3 phase power rail, 3m. white

SUCCESSION ARTICLE	-	PROTECTION CLASS	none
WEIGHT IN KG	2.6	SIMILAR TO RAL-COLOUR	9003
		SUITABLE FOR SURFACE MOUNTING	Yes
		ETIM GRUPPEN-ID	EC000101
		SUITABLE FOR SUSPENDED MOUNTING	Yes
Dimensions		SURFACE-MOUNTED	Yes
length: 3000mm		BENDABLE	Nein
width: 31mm		SUITABLE FOR BUS CONNECTION	Nein
height: 36mm		BUILT-IN	No
		MATERIAL	Aluminium
		BEG FUNDING	Only relevant in Germany
		SURFACE FINISHING	Matt
		SHAPE	Other
		COLOUR	White