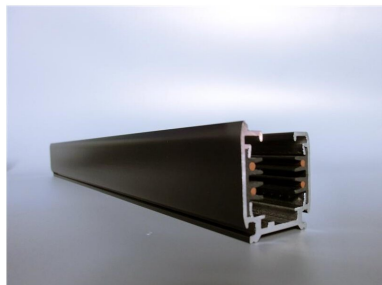


PRODUCT NO. 3893-52

DOTLUX 3 phase power rail, 2 m, black matt



to the product page

- 3 phase power rail, 2 m. black

SUCCESSION ARTICLE -

WEIGHT IN KG 1.72

Dimensions

length: 2000mm

width: 31mm

height: 34mm

PROTECTION CLASS none
SIMILAR TO RAL-COLOUR 9005
SUITABLE FOR SURFACE MOUNTING Yes
ETIM GRUPPEN-ID EC000101
SUITABLE FOR SUSPENDED MOUNTING Yes
SURFACE-MOUNTED Yes
BENDABLE Nein
SUITABLE FOR BUS CONNECTION Nein
BUILT-IN No
MATERIAL Aluminium
BEG FUNDING Only relevant in Germany
SURFACE FINISHING Matt
SHAPE Other
COLOUR Black