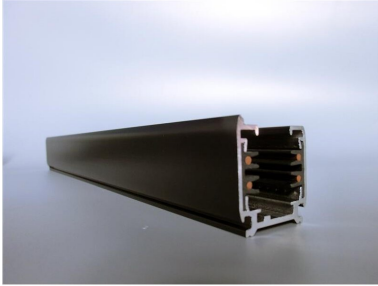


PRODUCT NO. 3893-52-B-Ware

DOTLUX 3-circuit conductor rail, 2 m, black matt



to the product page

- 3 phase busbar, 2 m. black

SUCCESSION ARTICLE	-	PROTECTION CLASS	none
WEIGHT IN KG	1.72	WARRANTY IN YEARS	0
		SIMILAR TO RAL-COLOUR	9005
		SUITABLE FOR SURFACE MOUNTING	Yes
		SUITABLE FOR SUSPENDED MOUNTING	Yes
Dimensions		SURFACE-MOUNTED	Yes
length: 2000mm		BENDABLE	Nein
width: 31mm		SUITABLE FOR BUS CONNECTION	Nein
height: 34mm		BUILT-IN	No
		MATERIAL	Aluminium
		BEG FUNDING	Only relevant in Germany
		SURFACE FINISHING	Matt
		SHAPE	Other
		COLOUR	Black